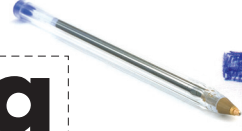


U

an abecedary of writing

a = a
allography

The letter *a* is depicted with two common glyphs which differ between typefaces and handwriting styles. Allography is this variation in how letters are formed.



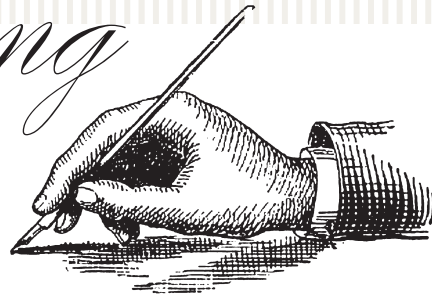
ballpoint

A ballpoint pen has an internal chamber filled with a viscous ink that is dispensed at tip during use by the rolling action of a small metal sphere made of brass, steel or tungsten carbide.

B C

Cursive
cursive

Cursive is any style of handwriting that is designed for writing notes and letters quickly by hand. In the Arabic, Latin, and Cyrillic writing systems, the letters in a word are connected, making a word one single complex stroke. In fact, the word comes from the Latin *cursivus*, meaning "flowing".



D dip pen

A dip or nib pen consists of a metal nib with capillary channels mounted on a handle or holder, often made of wood. Other materials can be used for the holder, including bone, metal and plastic, while some pens are made entirely of glass. Dip pens have no ink reservoir; therefore the user has to recharge the ink from an ink bowl or bottle in order to continue drawing or writing.

G graphite

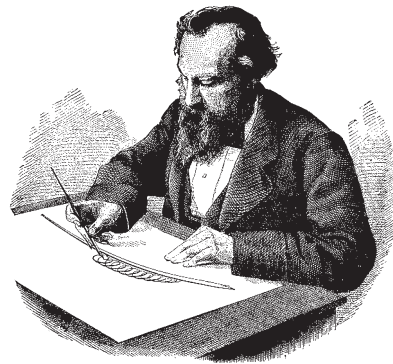
The mineral graphite is one of the allotropes of carbon. It is used in pencils, where it is commonly called lead, as distinguished from the actual metallic element lead.



handwriting

Handwriting or penmanship is the art of writing with the hand and a writing instrument. Styles of handwriting are also called hands or scripts.

H



I



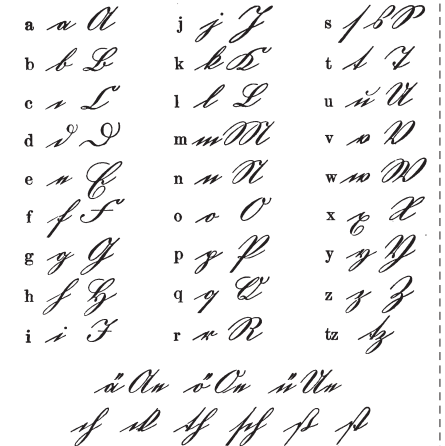
the j-form

J The J-form is one of the basic shapes in script drawing: the *J* is drawn on the right side of the small *i* to form the *y*, it is drawn on the right side of the small *o* to form the *g*, the *J* inverted and protracted forms the straight *f* and the *J* surmounted by the inverted *J* forms a running *f*.

K

kurrent

An old form of German hand-writing based on late medieval cursive writing. It is known in full as *Kurrentschrift* or *Alte Deutsche Schrift*. In English, its name has been seen shortened to *Schrift*.



flip perfect stop fin

L ligature

In handwriting, a ligature is made by joining two or more characters in a way they wouldn't usually be, either by merging their parts, writing one above another or one inside another. In printing, a ligature is a group of characters that is typeset as a unit.

TYPEFACE: MRS. EAVES LIGATURES

R rollerball

Using ballpoint mechanisms with water-based liquid or gelled ink, as opposed to the oil-based viscous inks found in ballpoint pens, these less viscous inks tend to saturate more deeply and more widely into paper.



M



marker

A felt-tip pen, or marker, is a pen which has its own ink-source, and usually a tip made of a porous material, such as felt or nylon.

N nib

A nib is the part of a quill, dip pen or fountain pen which comes into contact with the writing surface in order to deposit ink. They vary in their purpose, shape, size, as well as the material they are made from.



T tip
Sharpen your pencil points!

U universal penman



George Bickham the Elder (1684-1758) was an English writing master and engraver best known for his engraving work in *The Universal Penman*, a collection from twenty-six London penmanship masters in 1733.

O oblique penholder

Designed so that the pen point is headed in the direction of the stroke and pitched at the right angle necessary for left handed lettering or for accomplishing Copperplate/Spennerian Script and scroll work.

P

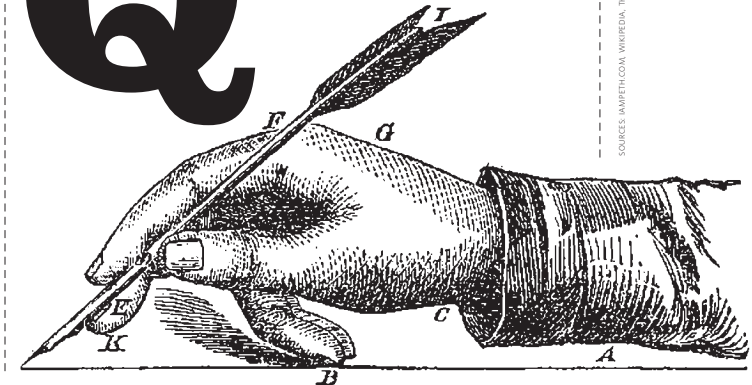
pounce

Before the invention of blotting paper, fine powder was sprinkled over wet ink to hasten drying. It was prepared from finely ground salt, fine sand, or powdered soft minerals such as talc or soapstone.

Q

quill

A quill pen is a writing implement made from a flight feather (preferably a primary wing-feather) of a large bird.

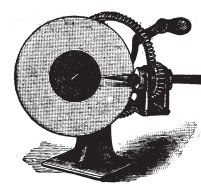


Available now for Everyone interested in learning the art of Beautiful Penmanship

spencerian script

Platt Rogers Spencer was impressed with the idea that America needed a penmanship style that could be written quickly, legibly, and elegantly to aid in matters of business correspondence as well as personal letter-writing. This style flourished in the United States from 1850 to 1925.

S



THE GEM PENCIL SHARPENER,
For Schools and Offices.
Sharpens both Lead and Slate Pencils.

GOULD & COOK, Manufacturers,
Leominster, Mass.
Send for Circular.
Mention Harper's.

Before the development of dedicated pencil sharpeners, pencils were sharpened by shaving with a knife. Mechanical sharpeners made this task much easier and gave a more uniform result.

V vellum

A mammal skin prepared for writing or printing.

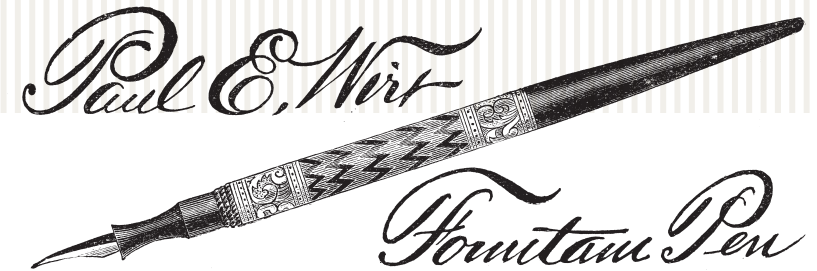
W



zanerian

Charles Paxton Zaner (1864-1918) founded the Zanerian College of Penmanship in Columbus, Ohio. Students trained for careers as penmen, illustrators, engravers and engrossers (specialists in the kind of ornamental writing used for diplomas and certificates).

Z



Positively The Leading Pen.

Mention HARPER'S MAGAZINE.

Ask dealers or send for catalogue.

A Million in use.

BLOOMSBURG, PA.

F fountain pen

A fountain pen is a nib pen that, unlike its predecessor the dip pen, contains an internal reservoir of water-based liquid ink. From the reservoir, the ink is drawn through a feed to the nib and then to the paper via a combination of gravity and capillary action. As a result, the typical fountain pen requires little or no pressure to write.